

Tulse Hill, Brixton, SW2

2 bedroom flat to let

£475 Per Week

Furnished

Property Details

A sleek two double bedroom flat, located just under a five minute walk from Brockwell Park.

Features

- Bright and airy throughout
- Close to Brockwell Park
- Open plan kitchen / reception
- Light and airy
- 2 double bedrooms
- Short walk to Herne Hill Station

Council tax band D EPC rating C (80)





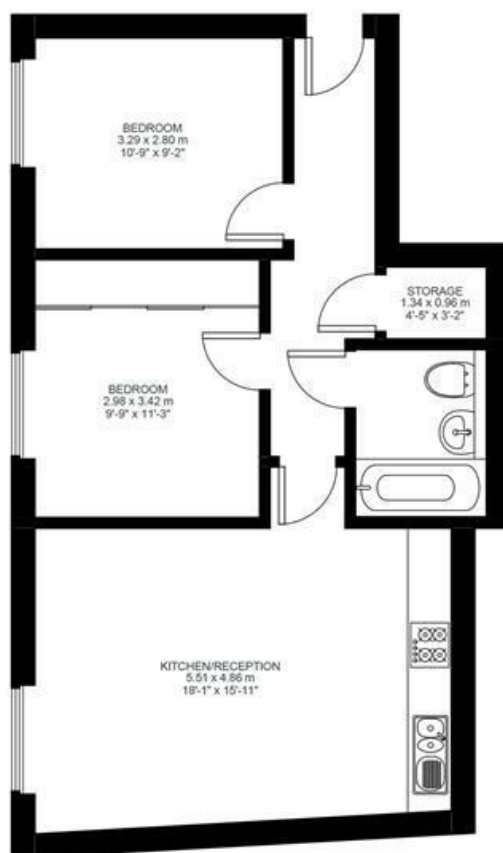
2 Bed flat

Approx internal area:

606 sqft 56 sqm

While we do try our very best, floor plans are produced as a guide only and we take no responsibility for the precise accuracy with which any property is represented

Tulse Hill



First Floor



Tulse Hill, Brixton, SW2

